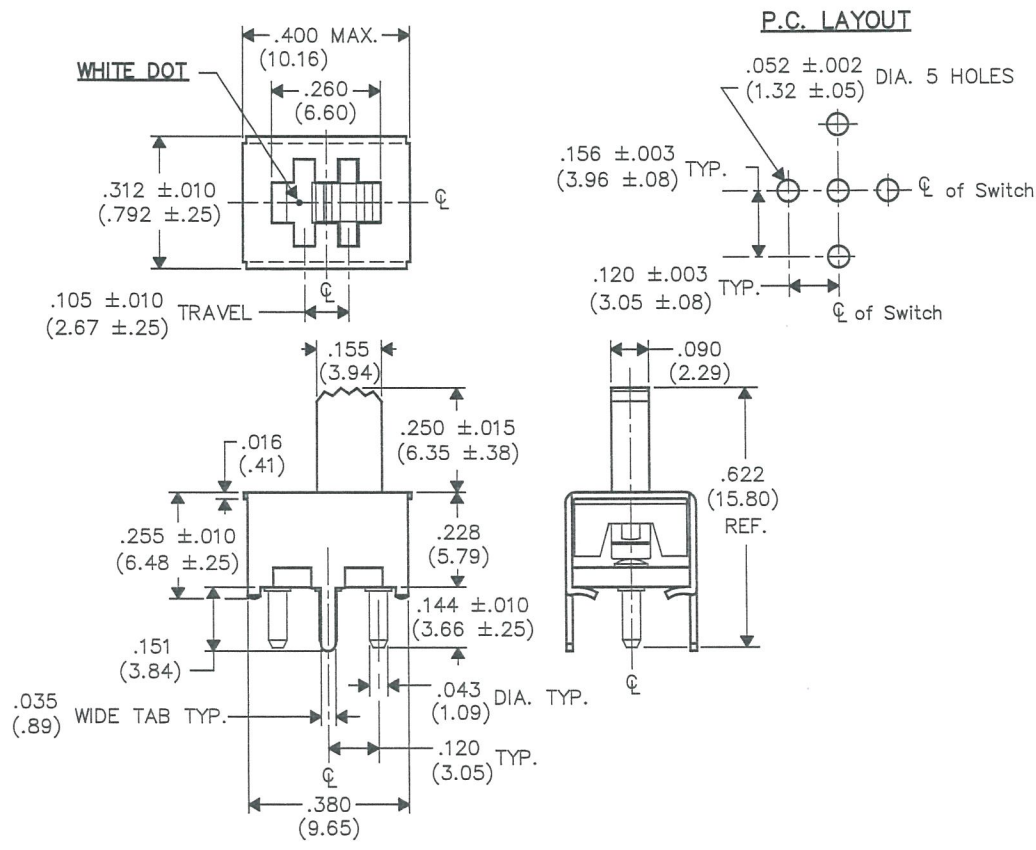


DIMENSIONS IN INCHES (MILLIMETERS)  
DO NOT SCALE DRAWING .....

Dwg. No.  
**GS-111-0044**

F  
D  
C  
B  
A

THIS INFORMATION IS CONFIDENTIAL AND PROPRIETARY TO CW INDUSTRIES INCORPORATED AND ITS AFFILIATES. IT MAY NOT BE DISCLOSED TO ANYONE OTHER THAN CW INDUSTRIES PERSONNEL, WITHOUT WRITTEN AUTHORIZATION FROM CW INDUSTRIES INCORPORATED, SOUTHAMPTON, PENNSYLVANIA USA.



1 2 3 4 5 6 7 8 9 10

B-FORMAT 2002

REVISIONS	
0	RELEASED. DWG 7-15-13 Jul. 19, 2013
1	Corrected button height ..250 was 342. DWG 10/02/18 1 OCT 05 2018

**CW INDUSTRIES**  
Southampton, Pa. 18966

**TOLERANCES UNLESS OTHERWISE SPECIFIED**

2 Place Decimal ±.010	METRIC
3 Place Decimal ±.005	1 Place Dec. ±.25mm
Angles ..... ±1'	2 Place Dec. ±.13mm

Made for: CW IND.  
 Drawn by: DGW 7-15-13  
 Checked by: G. GOLD 10-3-18  
 Approval: *[Signature]* 10/9/18

Title:	MICRO SWITCH S.P. - D.T.
Division:	SWITCH
Dwg. No.	GS-111-0044

**MASTER**